

Alcohol Surface Disinfectant Wipes

Perfect for water sensitive environments, these high alcohol wipes offer a broad spectrum efficacy across bacteria, yeast and viruses, providing fast cleaning and disinfection without leaving any chemical residue on surfaces.

3 products in this range.

At a glance:



- PHMB free
- Quat free
- Food contact safe
- Ethanol based



Sustainability:



- Lighter 2 litre canister with 27% plastic reduction
- Tritex material, canister, buckets, lids, and labels are fully recyclable
- Cardboard used in our outer packaging is FSC approved

Ideal for:



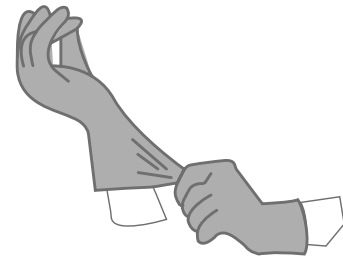
- Non-porous hard surface disinfection
- Use within dry food processing and manufacturing



How to use

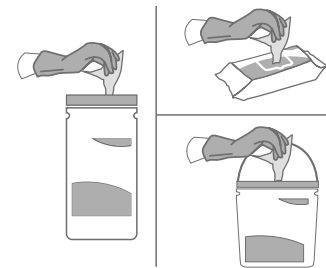
STEP 1 Risk assessment

Please follow your agreed risk assessment policy guidelines regarding the use of PPE.



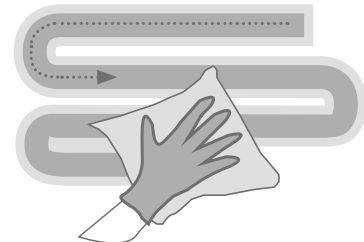
STEP 2 Wipe selection

Choose the dispenser type and dispense the wipe. Close pack to protect remaining wipes. If visible soil is present, remove with a wipe. Use a fresh wipe to disinfect the surface.



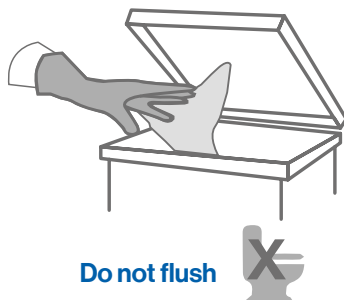
STEP 3 S-Shape technique

Wipe the surface in an S-Shape moving from clean to dirty. Use the wipe flat not scrunched, ensuring the entire surface is wetted. Do not go over the same area twice with the same wipe. Use a fresh wipe if your wipe becomes soiled or dry.



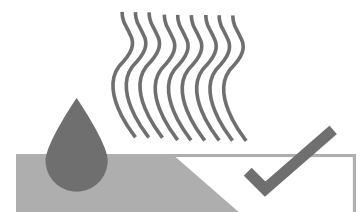
STEP 4 Discard

Discard used wipes in the appropriate waste bin following your local agreed guidelines.



STEP 5 Let dry

Allow the surface to dry naturally before use.



Use biocides safely. Always read the label and product information before use. Store in a cool, dry place out of direct sunlight.

Technical details

Pal's proprietary Tritex[®] material is made by bonding layers of spunbond and meltblown polypropylene fibres together in a high heat process. The addition of a hydrophilic coating means optimum and consistent liquid discharge.

Chemical formulation:

Pal TX Alcohol Surface Disinfectant solution is formulated using ethanol. It is commonly used as a disinfectant for surfaces and is non-corrosive to most surfaces. The ethanol solution has limited residual activity due to evaporation, which results in brief contact times and limited activity in the presence of organic material. Ethanol is most effective when combined with purified water to facilitate diffusion through the cell membrane. A mixture of 70% ethanol is effective against a wide spectrum of microorganisms.

Materials:

Tritex[®] material* is made by bonding layers of spunbond and meltblown polypropylene fibres together in a high heat process before a hydrophilic coating is applied. This material is 100% synthetic.



High strength

The material offers high strength in both directions – across and along the wipe.



Excellent solution retention

Ensuring even wetness throughout the wipe.



Very low linting

Low risk of leaving contaminating fibres on surfaces.



Efficient solution release

Active wipe ingredients are transferred to the surface rather than being trapped in the wipe material fibres.

*Does not apply to S76230TX in this product range.

Efficacy details

Effective against	Test	Kill time
Bactericidal		
Enterococcus hirae	EN 16615	1 minute
	EN 13727	1 minute
	EN 13697	1 minute
	EN 1276	1 minute
Escherichia coli	EN 13697	1 minute
	EN 1276	1 minute
Pseudomonas aeruginosa	EN 16615	1 minute
	EN 13727	1 minute
	EN 13697	1 minute
	EN 1276	1 minute
Staphylococcus aureus	EN 16615	1 minute
	EN 13727	1 minute
	EN 13697	1 minute
	EN 1276	1 minute
E. coli (O157)	EN 13697	1 minute
Campylobacter jejuni	EN 13697	1 minute
Listeria monocytogenes	EN 13697	1 minute
Mycobactericidal		
Mycobacterium avium	EN 14348	1 minute
Mycobacterium terrae	EN 14348	1 minute
Virucidal		
Adenovirus 5*	EN 14476	1 minute
BVDV (Hep C)	EN 14476	1 minute
Feline Infectious Peritonitis Virus (HIV)	EN 14476	1 minute
Murine norovirus*	EN 14476	1 minute
Human Coronavirus	EN 14476	30 seconds
Vaccinia virus Ankara (MVA)	EN 14476	30 seconds

Effective against	Test	Kill time
Yeasticidal and Fungicidal		
Aspergillus brasiliensis	EN 13624	2 minutes
	EN 1650	1 minute
	EN 13697	2 minutes
Candida albicans	EN 16615	1 minute
	EN 13697	2 minutes
	EN 13624	2 minutes
	EN 1650	1 minute

*These organisms represent Limited Virucidal efficacy according to EN 14476:2013+A2:2019 Annex A.



Products within this range



200 Wipe Canister

Packs per case – 10

Product Code – W200230



1000 Wipe Bucket

Packs per case – 2

Product Code – W220230



40 Wipe Flow Wrap

Packs per case – 6

Product Code – S76230TX